

Bob's Hill

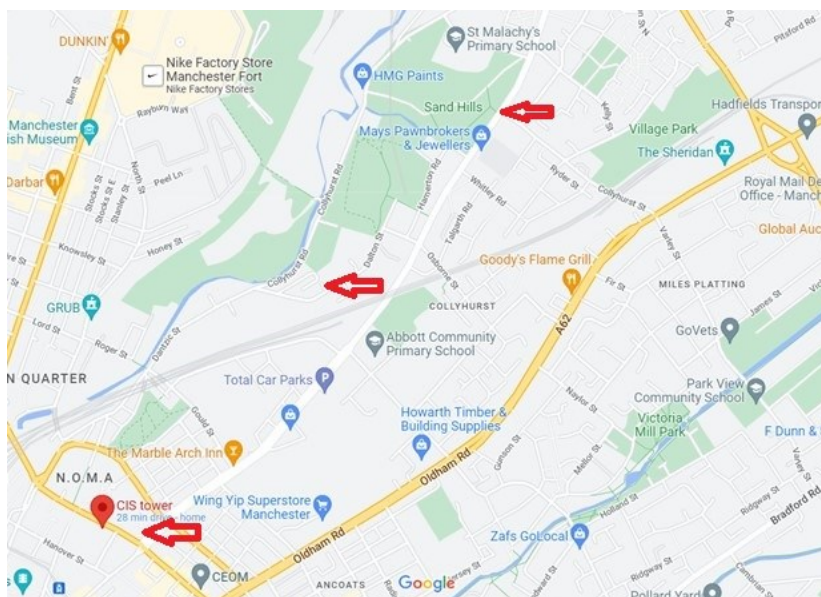


*Construction of the CIS (Co-operative Insurance Society) tower blocks.
Early 1960s, viewed from Collyhurst.
Photo of the original picture (current whereabouts unknown)*

This picture is set in the same area as a few of Brian's other paintings:

- | | |
|---|------|
| Swan Song for Eliza Ann Street, Jane's Hole, Collyhurst | 1963 |
| Eliza Street (to Jane's Hole), Collyhurst, Manchester | 1963 |
| Sir Galahad - Jane's Hole, Manchester | 1963 |
| Steps to Sand Street, Collyhurst | 1963 |

Brian was obviously attracted to this area of Manchester, perhaps seeking to capture how it looked in the early 1960s, ahead of it being fundamentally altered.



Map from Google Maps

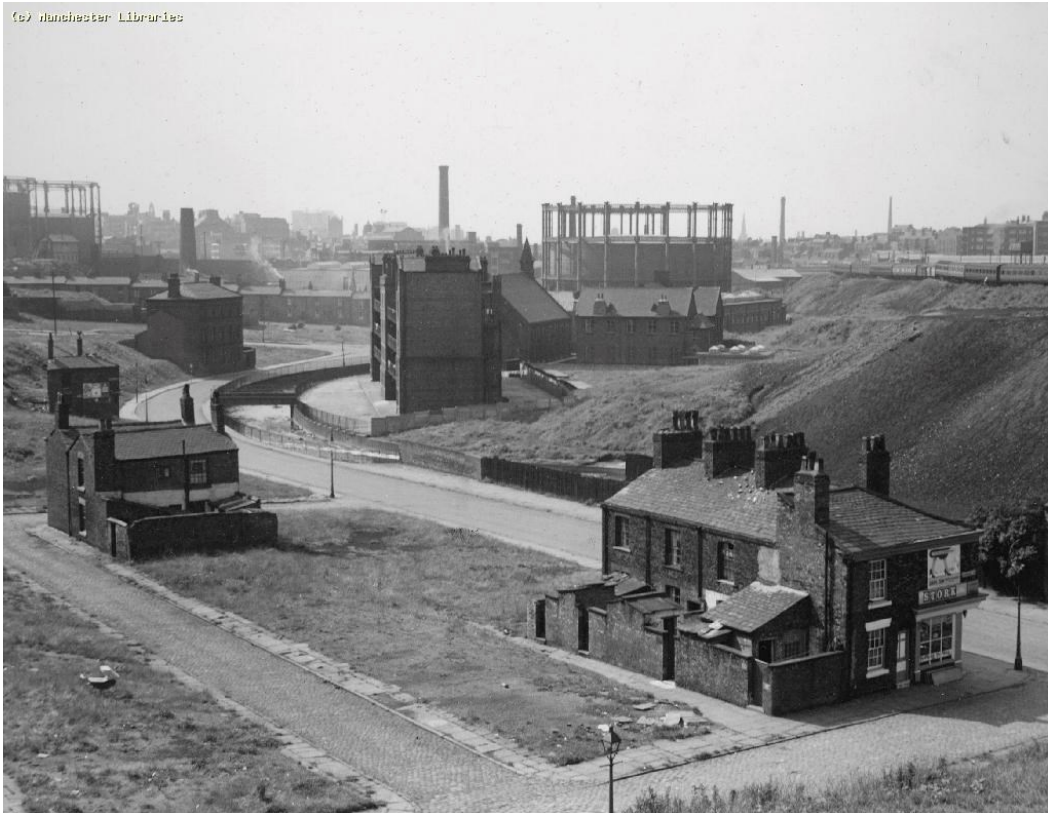
Bob's Hill was well known to members of the Facebook group, *Growing up in Miles Platting, Ancoats and Collyhurst* and I am grateful to them for providing the following information about the area:

- The road in the centre is Collyhurst Road/Dantzig Street.
- A similar view from 1958:



- If you stand at the top of the 77 steps up to Barnies, from Collyhurst Road, and look towards Rochdale Road the hill up from Collyhurst Road is Bob's hill. Alternatively, if you walked down Zinc Street from Rochdale Road and kept on walking towards Collyhurst Road, you would get to the top of Bob's Hill.
- Bob's Hill was at the top of Dantzig Street. Joseph Wilcox built a big compound there, where they would clean 45-gallon steel drums and resell them. My stepbrother worked there, and I did for a few months.
- 1923 Map of the area:





Photograph from Manchester Libraries

- That looks like Red Bank looking up to the CIS block, area also known as Angel Meadow. Although it never looked like a meadow and angels certainly didn't live there!

For further information on the CIS tower, please see:

<https://www.co-operativeheritage.coop/blog/cis-tower>

https://en.wikipedia.org/wiki/CIS_Tower

Ian Smith 2023